

Loudwater Combined School

Low-level concerns policy

Introduction

This policy forms part of the Loudwater Combined School's Staff Code of Conduct and should be read in conjunction with the school's Child Protection & Safeguarding Policy. The low-level concerns policy is based upon the statutory guidance 'Keeping Children Safe in Education 2024', the expectations within 'Guidance for Safer Working Practice 2019' and the principles within Farrer & Co's 'Developing and Implementing a Low-Level Concerns Policy 2022'. These documents are referenced throughout the policy.

Creating a culture in which all concerns about adults (including allegations that do not meet the harm threshold) are shared responsibly and with the right person, and recorded and dealt with appropriately, is crucial. If implemented well this should encourage an open and transparent culture, enable our school to identify concerning, problematic or inappropriate behaviour early, minimise the risk of abuse and ensure that adults working in or on behalf of the school are clear about professional boundaries and act within them, in accordance with the ethos and values of Loudwater Combined School.

Behaviour which is not consistent with the standards and values of Loudwater Combined School, and which does not meet the school's expectations specified in our staff code of conduct, needs to be addressed. Such behaviour can exist on a wide spectrum – from the inadvertent or thoughtless, through to that which is ultimately intended to enable abuse. Where a concern about an individual's behaviour meets the threshold of an allegation, clear guidance exists to support the member of staff in responding to these concerns.

It is important to recognise that, in practice, the words 'allegation' and 'concern' can be and are used interchangeably by different people. Sometimes individuals may shy away from the word 'allegation' and express it as a 'concern' instead. The crucial point is that whatever the language used, the behaviour referred to may, on the one hand, be capable of meeting the harm threshold (and hence be referable), or, on the other, it does not meet the harm threshold (in which case it should be treated as a low-level concern).

Purpose of a Low-Level Concerns Policy

This policy enables all staff to share any concerns – no matter how small – about their own or another member of staff's behaviour with the Head teacher. If the Head teacher is absent, the concern should be shared with either The Deputy Headteacher- Belinda Welland or the Chair of Governors- Paul Randall.

Safeguarding and promoting the welfare of children is everyone's responsibility. The purpose of the policy is to create and embed a culture of openness, trust and transparency in which the clear values and expected behaviour set out in the staff code of conduct, are constantly lived, monitored and reinforced by all staff.

In order to achieve this purpose, Loudwater Combined School will:

- Ensure that staff are clear about what appropriate behaviour is, and are confident in distinguishing expected and appropriate behaviour from concerning, problematic or inappropriate behaviour in themselves and others.
- Recognise the importance of professional boundaries and when to report.
- Empower staff to share any low-level concerns with the Head teacher and to help all staff to interpret the sharing of such concerns as a neutral act.
- Address unprofessional behaviour and support the individual to correct it at an early stage.
- Identify concerning, problematic or inappropriate behaviour – including any patterns – that may need to be consulted upon with, or referred to, the LADO.
- Ensure all concerns that are raised are handled sensitively and proportionately.
- Help identify any areas for development in the organisation’s safeguarding system as well as any training needs.

Allegations that may meet the harm threshold

The term ‘allegation of harm’ means that it is alleged that a person who works with children meets the harm threshold as specified below:

- behaved in a way that has harmed a child or may have harmed a child;
- and/or possibly committed a criminal offence against or related to a child;
- and/or behaved towards a child or children in a way that indicates they may pose a risk of harm to children;
- and/or behaved or may have behaved in a way that indicates they may not be suitable to work with children

Staff should follow the Allegations Against Staff and Volunteers Policy and ensure all allegations are reported to the Head teacher.

Concerns that do not meet the harm threshold: Low Level Concerns

KCSIE states that, as part of their whole school approach to safeguarding, schools should ensure that they promote an open and transparent culture in which all concerns about all adults working in or on behalf of the school or college (including supply teachers, volunteers and contractors) are dealt with promptly and appropriately.

The term ‘low level’ concern does not mean that it is insignificant, it means that the adult’s behaviour towards a child does not meet the harm threshold as set out in Section 3. A low level concern is any concern – no matter how small, and even if no more than causing a sense of unease or a ‘nagging doubt’ – that an adult may have acted in a way that: is inconsistent with an organisation’s staff code of conduct, including inappropriate conduct outside of work, and does not meet the allegation threshold, or is otherwise not serious enough to consider a referral to the LADO – but may merit consulting with and seeking advice from the LADO.

Staff do not need to be able to determine in each case whether their concern is a low-level concern, or if it is not serious enough to consider a referral to the LADO, or whether it meets the threshold of an allegation. Once staff have shared what they believe to be a low-level concern, that determination should be made by the Head teacher and responded to in line with this policy.

A culture of vigilance and staff training on Low Level Concerns

Loudwater Combined School has a culture of openness and trust is fostered within the organisation so that staff can share any concerns about the conduct of colleagues and be assured that these will be received and handled in a sensitive manner.

If we educate adults to be informed about, and to identify concerning, problematic or inappropriate behaviour, rather than think they can recognise dangerous people, they can be prepared to act when they observe behaviour which violates Loudwater Combined School's staff code of conduct. They can, as Tabachnick and Baker explain, then draw attention to "the hundreds of small comments, harassments, emotional and physical boundary violations, and other signs that may precede [child] sexual abuse" – what may be considered in the broadest sense to be [part of a conscious, or an unwitting] grooming process.

Leaders are committed to ensuring that the staff code of conduct and its expectations are adhered to. Leaders implement and reinforce these expectations and address any attempt to bypass policies or procedures regardless of the person in question's status.

Staff are required to read the Low-Level Concerns Policy and indicate that this has been read. This is to ensure staff know their professional duties and boundaries so that they are clear on the standard of behaviour expected of them. These expectations apply to all staff, volunteers, visitors and Governors.

All new staff will receive training on this policy on induction.

We acknowledge that having a clear DBS simply confirms that an individual has not been discovered to present a risk to children; it is not predictive about potential risk. Research shows that the majority of organisational child sex offenders did not have a previous criminal record at the time they offended, although they may subsequently be found to have had numerous previous victims. We must therefore continue to have an ongoing culture of vigilance and maintain a mind-set of 'it could happen here'.

Sharing Low Level Concerns

It is critical that all low-level concerns are ultimately received by the Head teacher. Having one recipient of all such concerns should allow any potential patterns of concerning, problematic or inappropriate behaviour to be identified, and ensure that no information is potentially lost.

It is important that low-level concerns are shared with the Head teacher as soon as reasonably possible and, in any event, within 24 hours of becoming aware of the concern where it relates to a specific incident.

Whilst staff should share information with the Head teacher as soon as reasonably possible, it should also be emphasised that it is never too late to share a low-level concern and a delay should never be seen as a barrier to sharing.

If the Head teacher is absent for any reason, low level concerns should be shared with a clearly identified 'deputy DSL,' Belinda Welland or Jackie Olcot who will inform the Head teacher immediately on their return.

In the event of concerns about the Head teacher, these should be referred to the Chair of Governors, Mr Paul Randall.

Anonymity

If the staff member who raises the concern does not wish to be named, then the Head teacher will respect that person's wishes as far as possible.

There may be circumstances where the staff member will need to be named (for example, where it is necessary in order to carry out a fair disciplinary process) and, for this reason, anonymity will never be promised to members of staff who share low level concerns. Where possible, we will try to encourage staff to consent to be named, as this will help to create a culture of openness and transparency.

Self-Reporting

Occasionally a member of staff may find themselves in a situation which could be misinterpreted, or might appear compromising to others. Equally, a member of staff may, for whatever reason, have behaved in a manner which, on reflection, they consider falls below the standard set out in the staff code of conduct.

Self-reporting in these circumstances can be positive for a number of reasons:

- it is self-protective, in that it enables a potentially difficult issue to be addressed at the earliest opportunity;
- it demonstrates awareness of the expected behavioural standards and self-awareness as to the individual's own actions or how they could be perceived and, crucially, it is an important means of maintaining a culture where everyone aspires to the highest standards of conduct and behaviour.

In line with KCSIE, Loudwater Combined School will ensure that there is an environment where staff are encouraged and feel confident to self-refer.

Sharing and Recording of Low-Level Concerns

Staff will be given the option of sharing their low-level concern verbally with the Head teacher in the first instance, or by completing a simple low-level concerns form, an example of which can be found in Appendix C. Where the low-level concern is provided verbally, the Head teacher will make an appropriate record of the conversation, either contemporaneously or immediately following the discussion using the low-level concerns form in Appendix C.

Sound professional judgement will be exercised by the Head teacher in determining what information is necessary to record for safeguarding purposes. The name of the individual sharing the low-level concern and their role should be stated, as should the name of the individual about whom the concern is being raised, and their role within the organisation at the time the concern is raised.

The record will include brief context in which the low-level concern arose, and concise details (which are chronological and as precise and accurate as possible) of any such concern and relevant incident(s). The record must be signed, timed and dated.

Responding to a Low-Level Concern

Once the Head teacher has received the low-level concern, they will (not necessarily in the below order but in an appropriate sequence according to the nature and detail of the particular concern shared with them):

- speak to the person who raised the concern (unless it has been raised anonymously), regardless of whether a written summary, or completed low-level concerns form has been provided;
- speak to any potential witnesses (unless advised not to do so by the LADO / other relevant external agencies, where they have been contacted);
- speak to the individual about whom the low-level concern has been raised (unless advised not to do so by the LADO / other relevant external agencies, where they have been contacted);
- review the information and determine whether the behaviour:
 - I. is entirely consistent with their staff code of conduct and the law;
 - II. constitutes a low-level concern;
 - III. is not serious enough to consider a referral to the LADO – but may merit consulting with and seeking advice from the LADO;
 - IV. when considered with any other low-level concerns that have previously been raised about the same individual, could now meet the threshold of an allegation and should be referred to the LADO
 - V. in and of itself meets the threshold of an allegation and should be referred to the LADO;

The Head teacher will always seek advice from the LADO where they are in any doubt whatsoever.

While responding to any incident, the Head teacher will make appropriate notes of:

- all internal conversations – including with the person who initially shared the low-level concern (where this has been possible),
- the adult about whom the concern has been shared (subject to the above), and any relevant witnesses (subject to the above);
- all external conversations – for example, with the LADO (where they have been contacted); the action taken and the rationale for the decision taken.

Possible Outcomes from a Low-Level Concern

If it is determined that the behaviour is entirely consistent with the school's staff code of conduct and the law, the Head teacher will:

- update the individual in question and inform them of the action taken as above;
- speak to the person who shared the low-level concern to provide them with feedback about how and why the behaviour is consistent with the organisation's staff code of conduct and the law;
- consider if the situation may indicate that the staff code of conduct or low-level concerns policy are not clear enough,
- or if further training is required.

If the same or a similar low-level concern is subsequently shared about the same individual, and the behaviour in question is also consistent with the staff code of conduct, then an issue may need to be addressed about how the subject of the concern's behaviour is being perceived by others.

If it is determined that the behaviour constitutes a low-level concern, it will be responded to in a sensitive and proportionate way – on the one hand maintaining confidence that such concerns when raised will be handled promptly and effectively whilst, on the other hand, protecting staff from any potential false allegations or misunderstandings.

Any investigation of low-level concerns will be done discreetly and on a need-to-know basis.

Most low-level concerns by their very nature are likely to be minor. Some will not give rise to any ongoing concern and, accordingly, will not require any further action. Others may be most appropriately dealt with by means of management guidance and/or training.

In many cases, a low-level concern will simply require a conversation with the individual about whom the concern has been raised. It has long been understood that lasting change in behaviour is least likely to be achieved by an approach experienced as critical or threatening.

Any such conversation will include being clear with the individual as to why their behaviour is concerning, problematic or inappropriate, what change is required in their behaviour, enquiring what, if any, support they might need in order to achieve and maintain that, and being clear about the consequences if they fail to reach the required standard or repeat the behaviour in question.

Ongoing and transparent monitoring of the individual's behaviour may be appropriate. An action plan or risk assessment which is agreed with the individual, and regularly reviewed with them, may also be appropriate.

Some low-level concerns may also raise issues of misconduct or poor performance. The Head teacher will also consider whether this is the case – by referring to the organisation's disciplinary and/or capability procedure and taking advice from the school's HR service (if necessary) on a named or no-names basis where necessary. Where a low-level concern does not raise misconduct or poor performance issues, it will not be a matter for HR.

Where a low-level concern relates to a person employed by a supply agency or a contractor, that concern will be raised with their employers, so that any potential patterns of inappropriate behaviour can be identified. How an organisation responds to a low-level concern may be different depending on the employment status of the individual who is the subject of the concern - i.e. whether they are an employee, or worker to whom the organisation's disciplinary procedure would apply; or a contractor, Governor or volunteer who may be subject to alternative procedures.

Some concerns may trigger the school's disciplinary, grievance or whistleblowing procedures, which should be followed where appropriate. Where low level concerns are raised which in fact require other internal processes to be followed, it is sometimes difficult to determine how best to investigate the concern and which procedure to follow. The Head teacher will exercise their professional judgement and, if in any doubt, they will seek advice from other external agencies including the LADO, First Response or Buckinghamshire Children's Safeguarding Partnership.

If the school's disciplinary procedure is triggered, the school will ensure that the individual has a full opportunity to respond to any factual allegations which form the basis of a disciplinary case against them.

If an organisation ultimately disciplines or dismisses a staff member for cumulative alleged 'breaches' of the staff code of conduct which were not brought contemporaneously to the individual's attention, and to which they have not had a proper opportunity to respond, clearly there will be a lack of fairness and natural justice and the risk of a finding of unfair dismissal by an Employment Tribunal. Staff therefore need to understand that when they share what they believe to be a low-level concern, the Head teacher will speak to the adult who is the subject of that concern – no matter how 'low' level the concern may be perceived to be, to gain the subject's account – and to make appropriate records (as above), which may be referenced in any subsequent disciplinary proceedings.

If it is determined that the behaviour, whilst not sufficiently serious to consider a referral to the LADO nonetheless merits consulting with and seeking advice from the LADO, then action (if/as necessary) will be taken in accordance with the LADO's advice.

If, when considered with any other low-level concerns that have previously been shared about the same individual, could now meet the threshold of an allegation, then it should be referred to the LADO in accordance with Part 4 of KCSIE.

Storage of Low-Level Concerns

Loudwater Combined School will retain all records of low-level concerns (including those which are subsequently deemed by the Head teacher to relate to behaviour which is entirely consistent with the staff code of conduct) in a central electronic low-level concerns file. These records will be kept confidential and held securely with limited access given to the Head teacher and the Deputy Designated Safeguarding Leads. The school Business Manager may be given access if required for HR processes.

Where multiple low-level concerns have been shared regarding the same individual, these will be kept in chronological order as a running record.

Low level concerns will not be stored on personnel files. Saving low level concerns separately will allow Leaders to spot any potential patterns of behaviour whilst reassuring staff to share low level concerns.

Referrals made to the LADO where the behaviour in question:

- had not originally been considered serious enough to consider a referral to the LADO but merited consulting with and seeking advice from them;
- is determined to meet the threshold of an allegation when considered with any other low level concerns that have previously been raised about the same individual;
- or in and of itself meets the threshold of an allegation.

Records relating to the behaviour (as referenced in 12.4) should be placed and retained on the staff member's personnel file, whilst also being retained on the central low-level concerns file.

Material on the personnel file will be retained in accordance with Part 4 of KCSIE which requires schools and colleges in England to produce a clear and comprehensive summary of all allegations (except those which are found to have been malicious), details of how the allegation was followed up and resolved, and a note of any action taken and decisions reached, to be kept on the confidential personnel file of the staff member, and a copy provided to them.

Reviewing the Low-Level Concerns File

The Head teacher will review the central low-level concerns file periodically to ensure that all such concerns are being dealt with promptly and appropriately, and that any potential patterns of concerning, problematic or inappropriate behaviour are identified. A record of these reviews will be made and stored alongside the file, along with any subsequent actions taken.

Governors will receive relevant data relating to Low Level Concerns and review anonymised samples of low-level concerns at regular intervals, in order to ensure that these concerns have been responded to promptly and appropriately.

Retaining Low Level Concerns

Low-level concerns will be retained electronically in a central low-level concerns file (securely and applying appropriate access restrictions) unless and until further guidance provides otherwise.

When a staff member leaves and/or takes up new employment, that creates a natural point at which the content of the file may be reviewed to ensure it still has value (either as a safeguarding measure or because of its possible relevance to future claims), and is therefore necessary to keep. This is subject to the rights of individuals to object to or seek to erase or correct records about them under data protection law.

Low Level Concerns and References

KCSIE prohibits schools from referring to unsubstantiated, malicious or false allegations in references. Only safeguarding allegations that have been substantiated should be included in references. KCSIE states that: “where a low-level concern (or group of concerns) has met the threshold for referral to the LADO and found to be substantiated, it should be referred to in a reference”.

Low level concerns (or a group of concerns) which have not met the threshold for referral to the LADO which relate only to safeguarding should not be included in references unless they relate to issues which would normally be included in a reference, for example, misconduct or poor performance.

November 2024

To be reviewed annually

Reviewed November 2025

Appendices

Appendix A - Spectrum of Behaviour

Allegation

Behaviour which indicates that an adult who works with children has:

- behaved in a way that has harmed a child, or may have harmed a child;
- possibly committed a criminal offence against or related to a child;
- behaved towards a child or children in a way that indicates they may pose a risk of harm to children.

Low-Level Concern

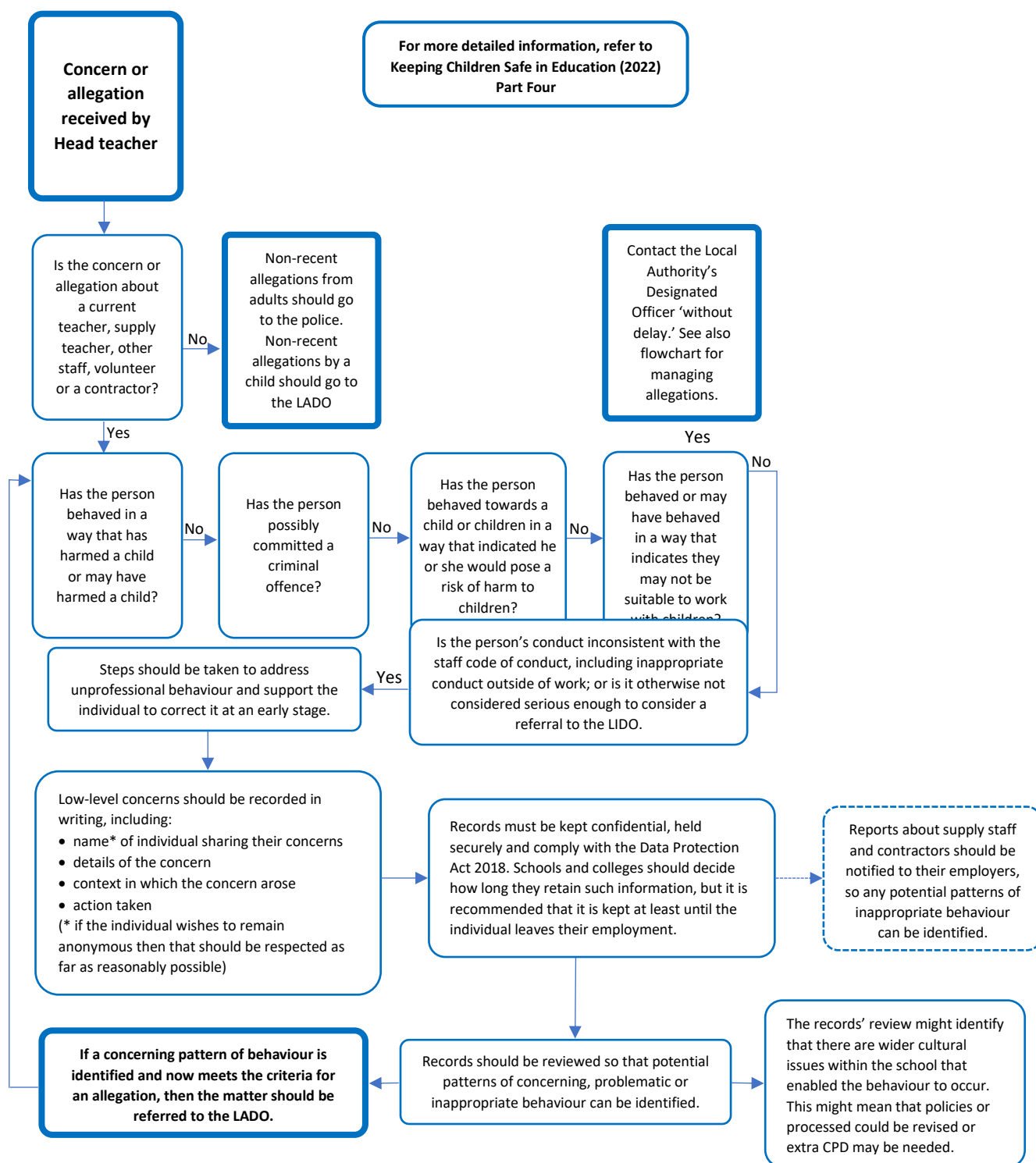
Any concern – no matter how small, even if no more than a ‘nagging doubt’ – that an adult may have acted in a manner which:

- is not consistent with an organisation’s Code of Conduct, and/or
- relates to their conduct outside of work which, even if not linked to a particular act or omission, has caused a sense of unease about that adult’s suitability to work with children.

Appropriate Conduct

Behaviour which is entirely consistent with the organisation’s Code of Conduct, and the law.

Appendix B - Responding to a Low-Level Concern Flowchart



What is a low-level concern?

The term 'low-level' concern does not mean that it is insignificant, it means that the behaviour towards a child does not meet the threshold set out at KCSIE (2022) paragraph 338. A low-level concern is any concern – no matter how small, and even if no more than causing a sense of unease or a 'nagging doubt' – that an adult working in or on behalf of the school or college may have acted in a way that:

- is consistent with the staff code of conduct, including inappropriate conduct outside of work; and
- does not meet the threshold or is otherwise not considered serious enough to consider a referral to the LADO.



Appendix C:

Low Level Concern Form

Please use this form to share any concern – no matter how small, and even if no more than causing a sense of unease or a ‘nagging doubt’ – that an adult may have acted in a way that:

- is inconsistent with Loudwater Combined School’s staff code of conduct, including inappropriate conduct outside of work, and
- does not meet the allegation threshold, or is otherwise not serious enough to consider a referral to the LADO.

You should provide a concise record – including brief context in which the low-level concern arose, and details which are chronological, and as precise and accurate as possible – of any such concern and relevant incident(s). Please use a separate sheet if necessary.

The record should be signed, timed and dated.

Concern Report by:

Name of Staff Member:

Details of Concern:

Concern Received by:

Date and Time:

Actions Taken and Outcome: